

# \$649,999 - 131 Chelsea Road, Chestermere

MLS® #A2210424

**\$649,999**

3 Bedroom, 3.00 Bathroom, 1,319 sqft  
Residential on 0.07 Acres

Chelsea\_CH, Chestermere, Alberta

This bright and airy home boasts a modern main floor with sleek stainless steel appliances, light grey cabinetry, and elegant white marble countertops. The open-concept layout connects the kitchen to the dining and living spaces—perfect for hosting guests. Large windows flood the main level with natural light. Upstairs, you'll find a 3-piece bathroom, convenient laundry, and three bedrooms, including a spacious primary suite with its own 3-piece ensuite. The home also includes dual ventilation for efficient hot and cold air exchange. Outside, the backyard features a concrete walkway that wraps around the house, a patio, and room for a garden or custom landscaping. A concrete pad beside the double detached garage.

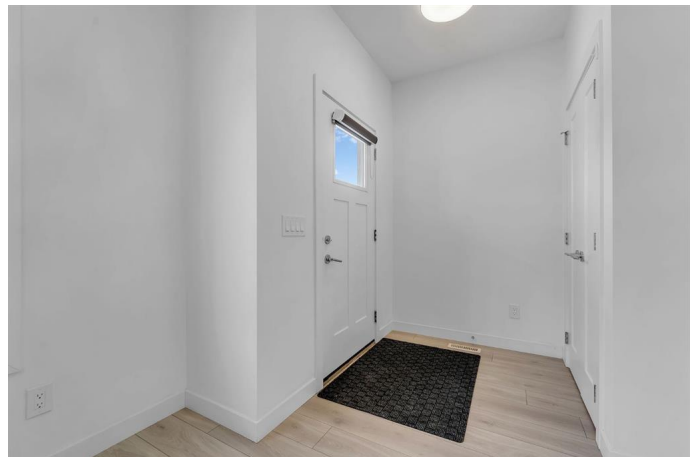
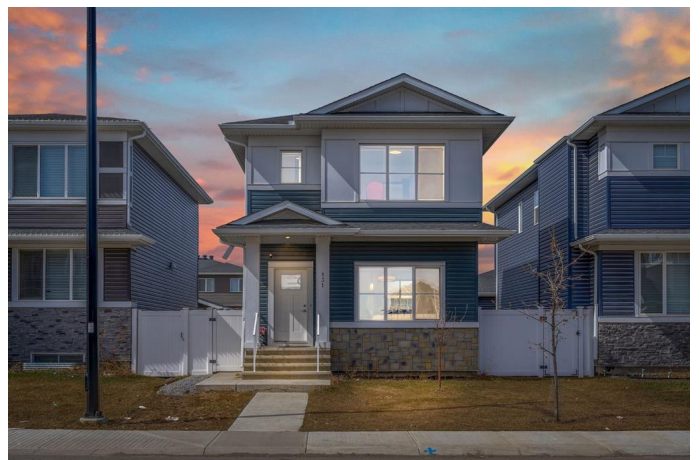
Downstairs, the partially developed lower level adds even more versatility with a recreation room featuring an oversized window and Den.

Enjoy the ultimate live-work-play lifestyle in Chestermere—close to amenities, green spaces, major routes, and year-round lake activities!

Built in 2020

## Essential Information

MLS® #	A2210424
Price	\$649,999
Bedrooms	3
Bathrooms	3.00



Full Baths	2
Half Baths	1
Square Footage	1,319
Acres	0.07
Year Built	2020
Type	Residential
Sub-Type	Detached
Style	2 Storey
Status	Active

### **Community Information**

Address	131 Chelsea Road
Subdivision	Chelsea_CH
City	Chestermere
County	Chestermere
Province	Alberta
Postal Code	T1X1Z4

### **Amenities**

Parking Spaces	2
Parking	Double Garage Detached
# of Garages	2

### **Interior**

Interior Features	Kitchen Island, No Smoking Home, Walk-In Closet(s)
Appliances	Garage Control(s), Gas Range, Microwave Hood Fan, Refrigerator, Washer/Dryer, Window Coverings
Heating	Forced Air
Cooling	None
Has Basement	Yes
Basement	Full, Partially Finished

### **Exterior**

Exterior Features	Private Yard
Lot Description	Back Lane, Back Yard, Fruit Trees/Shrub(s)
Roof	Asphalt Shingle
Construction	Concrete, Vinyl Siding, Wood Frame
Foundation	Poured Concrete

### **Additional Information**

Date Listed	April 9th, 2025
Days on Market	12
Zoning	R1

### **Listing Details**

Listing Office      TREC The Real Estate Company

Data is supplied by Pillar 9â,,ç MLSÂ® System. Pillar 9â,,ç is the owner of the copyright in its MLSÂ® System. Data is deemed reliable but is not guaranteed accurate by Pillar 9â,,ç. The trademarks MLSÂ®, Multiple Listing ServiceÂ® and the associated logos are owned by The Canadian Real Estate Association (CREA) and identify the quality of services provided by real estate professionals who are members of CREA. Used under license.