

# \$274,500 - 3416, 16320 24 Street Sw, Calgary

MLS® #A2211424

## \$274,500

1 Bedroom, 1.00 Bathroom, 622 sqft  
Residential on 0.00 Acres

Bridlewood, Calgary, Alberta

This top-floor unit is perfect for first-time homebuyers, downsizers, or savvy investors. Boasting a thoughtful layout, the spacious living and dining areas seamlessly flow from a welcoming foyer, offering both comfort and style. The kitchen features maple cabinets and sleek black appliances, making meal prep a breeze. You'll love the convenience of the in-suite laundry, equipped with a stacked washer and dryer (dryer includes a new vent), which doubles as additional storage space. Retreat to the primary bedroom, an impressively large space with ample room for a king-sized bed, TV, desk, dressers, or even a cozy sitting area. The generous walk-in closet ensures all your wardrobe needs are met. The adjacent 4-piece bathroom has been updated with a new tub handle and spout for added freshness. This home was repainted 3 years ago and has new electrical outlets and covers, including GFCIs in the kitchen and bathroom, three stylish new light fixtures. All window coverings are included, so you can move in hassle-free and start enjoying your new home right away. With low condo fees under \$350/month covering heat, electricity, water, and sewer, this property offers outstanding value. Convenience abounds with a designated parking stall right outside the main entrance and plenty of visitor parking available. Situated in the family-friendly community of Bridlewood, you'll be close to schools, parks, playgrounds, shopping, and major routes like Stoney Trail. Commuting is a



breeze with quick transit access to the LRT.  
Don't miss this incredible opportunityâ€”move  
in and start living your best life today!

Built in 2005

### **Essential Information**

MLS® #	A2211424
Price	\$274,500
Bedrooms	1
Bathrooms	1.00
Full Baths	1
Square Footage	622
Acres	0.00
Year Built	2005
Type	Residential
Sub-Type	Apartment
Style	Single Level Unit
Status	Active

### **Community Information**

Address	3416, 16320 24 Street Sw
Subdivision	Bridlewood
City	Calgary
County	Calgary
Province	Alberta
Postal Code	T2Y 5A1

### **Amenities**

Amenities	Visitor Parking
Parking Spaces	1
Parking	Stall

### **Interior**

Interior Features	Elevator, Vinyl Windows, Laminate Counters, Track Lighting, Walk-In Closet(s)
Appliances	Dishwasher, Dryer, Microwave Hood Fan, Refrigerator, Washer, Stove(s)
Heating	Baseboard

Cooling None

# of Stories 4

### Exterior

Exterior Features Balcony

Construction Stone, Vinyl Siding

### Additional Information

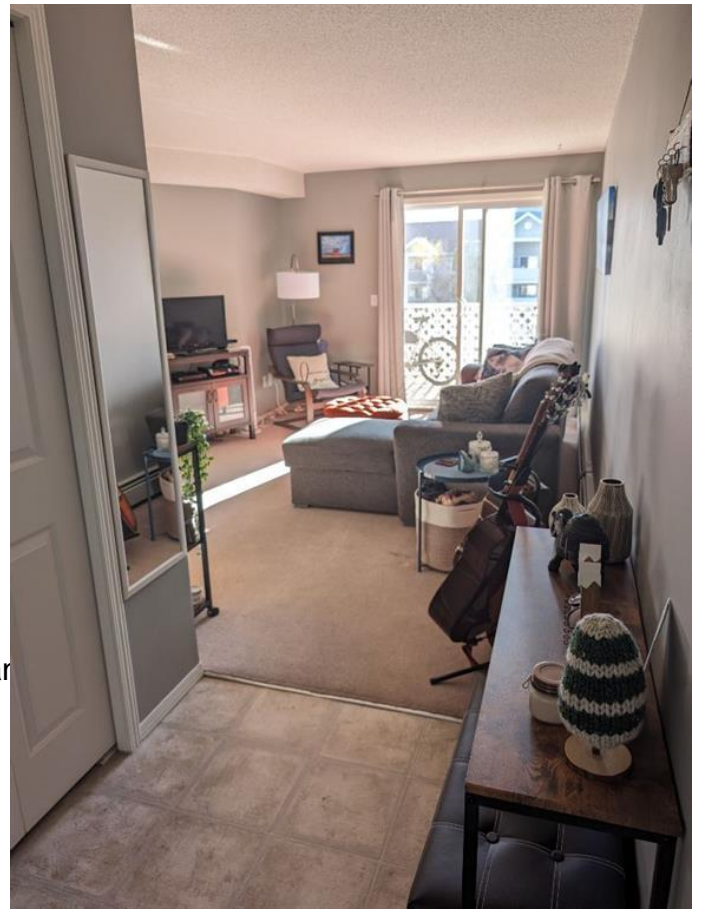
Date Listed April 13th, 2025

Days on Market 12

Zoning M-2

### Listing Details

Listing Office TREC The Real Estate Compar



Data is supplied by Pillar 9â„¢ MLSÂ® System. Pillar 9â„¢ is the owner of the copyright in its MLSÂ® System. Data is deemed reliable but is not guaranteed accurate by Pillar 9â„¢. The trademarks MLSÂ®, Multiple Listing ServiceÂ® and the associated logos are owned by The Canadian Real Estate Association (CREA) and identify the quality of services provided by real estate professionals who are members of CREA. Used under license.