

\$269,900 - 106, 510 Edmonton Trail Ne, Calgary

MLS® #A2231394

\$269,900

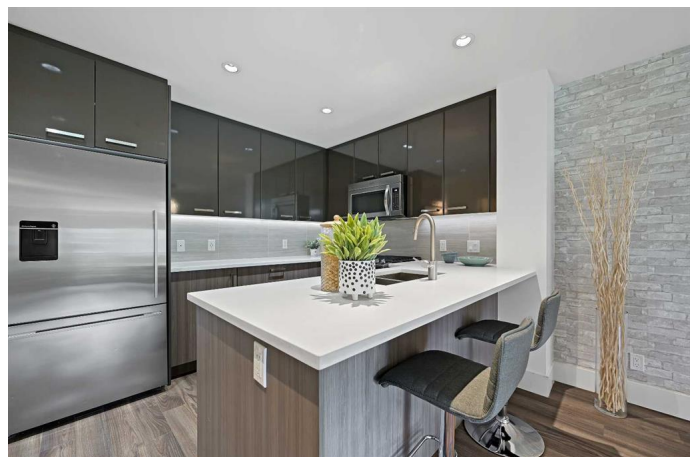
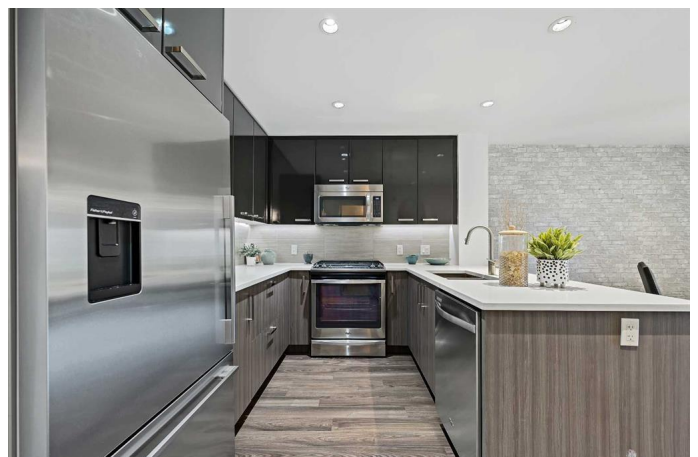
1 Bedroom, 1.00 Bathroom, 586 sqft

Residential on 0.00 Acres

Bridgeland/Riverside, Calgary, Alberta

Check out this beautifully updated one-bedroom, one-bathroom condo nestled in the heart of Bridgeland, one of Calgary's most dynamic and desirable communities. Freshly painted and thoughtfully designed, this modern home features an open-concept layout complemented by expansive windows that flood the space with natural light. The sleek, contemporary kitchen is a chef's delight, showcasing quartz countertops, a generous island perfect for casual dining or entertaining, and premium stainless steel appliances. The kitchen flows effortlessly into a warm and inviting living area, creating a seamless space for everyday living. Step outside to your private patio with downtown views—ideal for morning coffee, evening drinks, or entertaining guests. The spacious bedroom offers new carpet, an office nook and a walk-through closet that connects to a well-appointed bathroom, blending comfort and convenience. Enjoy added perks like in-suite laundry, heated underground parking, a secure storage locker, and access to an on-site gym. All of this is set within walking distance of Bridgeland's popular restaurants, cafes, and boutique shops. With quick access to downtown, public transit, and the scenic Bow River pathways, this condo perfectly balances urban lifestyle with neighbourhood charm. Don't miss your chance to own this exceptional home—book your private showing today!

Built in 2016



Essential Information

| | |
|----------------|-------------------|
| MLS® # | A2231394 |
| Price | \$269,900 |
| Bedrooms | 1 |
| Bathrooms | 1.00 |
| Full Baths | 1 |
| Square Footage | 586 |
| Acres | 0.00 |
| Year Built | 2016 |
| Type | Residential |
| Sub-Type | Apartment |
| Style | Single Level Unit |
| Status | Active |

Community Information

| | |
|-------------|----------------------------|
| Address | 106, 510 Edmonton Trail Ne |
| Subdivision | Bridgeland/Riverside |
| City | Calgary |
| County | Calgary |
| Province | Alberta |
| Postal Code | T2E3H1 |

Amenities

| | |
|----------------|--|
| Amenities | Elevator(s), Laundry, Recreation Facilities, Secured Parking, Storage, Trash, Visitor Parking, Bicycle Storage |
| Parking Spaces | 1 |
| Parking | Heated Garage, Stall, Underground |

Interior

| | |
|-------------------|--|
| Interior Features | Kitchen Island, No Animal Home, No Smoking Home, Quartz Counters, Storage |
| Appliances | Dishwasher, Electric Range, Microwave Hood Fan, Refrigerator, Washer, Window Coverings |
| Heating | Baseboard |
| Cooling | None |
| # of Stories | 4 |

Exterior

| | |
|-------------------|---------|
| Exterior Features | Balcony |
|-------------------|---------|

Construction Cement Fiber Board, Vinyl Siding, Wood Frame

Additional Information

Date Listed June 16th, 2025

Days on Market 9

Zoning M-C2

Listing Details

Listing Office Century 21 Bamber Realty LTD.

Data is supplied by Pillar 9â„¢ MLS® System. Pillar 9â„¢ is the owner of the copyright in its MLS® System. Data is deemed reliable but is not guaranteed accurate by Pillar 9â„¢. The trademarks MLS®, Multiple Listing Service® and the associated logos are owned by The Canadian Real Estate Association (CREA) and identify the quality of services provided by real estate professionals who are members of CREA. Used under license.